

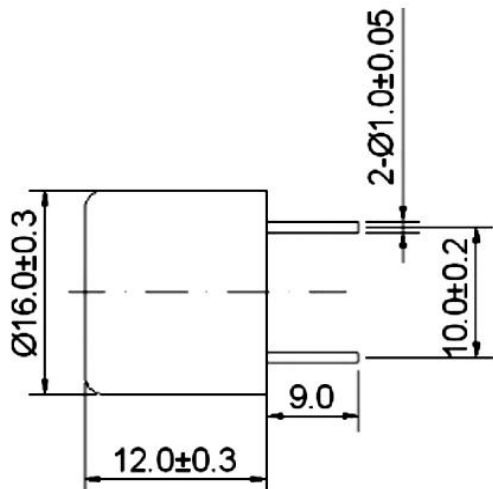
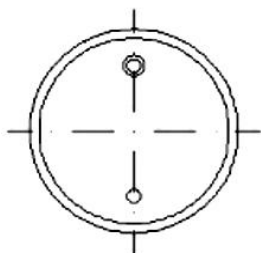
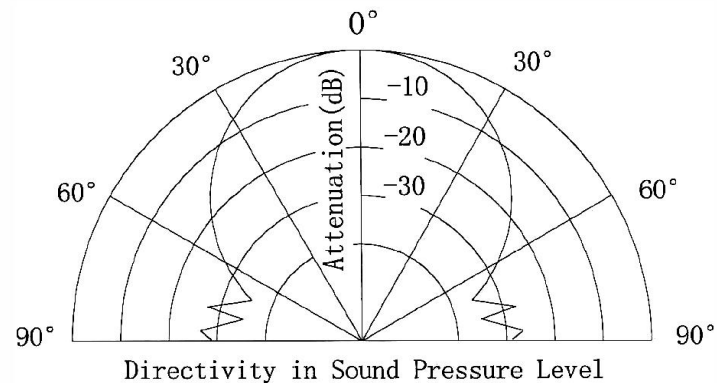
SPECIFICATION		
1	Model No.	EUS16F-40TR-WA
2	Construction	Open type transceiver
3	Nominal Frequency	40+/-1.0 KHZ
4	Sensitivity	≥-65V/u Mbar
5	S P L	≥115dB
6	Directivity(-6dB)	60 deg
7	Capacitance	2100±20%@1KHz
8	Allowable max.input voltage	40(40KHz)Vp-p
9	Detectable range	18m
10	Operating Temperature	-20....+85 °C
11	Housing material	Aluminum
12	Weight(g)	3

THIS DOCUMENT CONTAINS DATE  
 PROPRIETARY TO PROJECTS CHANGZHOU ESUNTECH  
 CO LTD. ANY USE OR REPRODUCTION,IN ANY FORM,  
 WITHOUT PRIOR WRITTEN PERMISSION OF  
 PROJECTS CHANGZHOU ESUNTECH CO LTD  
 IS PROHIBITED.  
 ©2003,Project Changzhou Esuntech Co Ltd

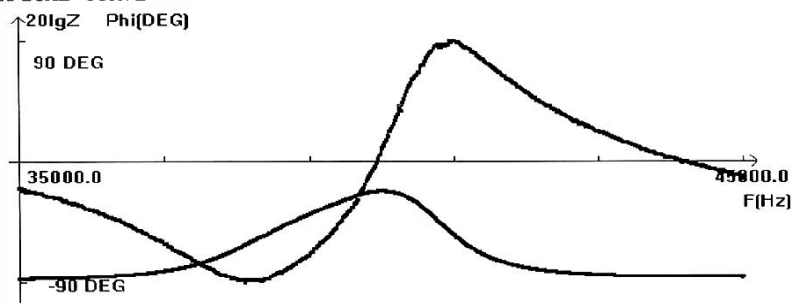


REVISION HISTORY			
LTR	DESCRIPTION	DATE	APPROVED
-	RELEASED FROM ENGINEERING	9/23/2003	Y M
A			
B			
C			


Beam Angle 指向角



TYPICAL CURVE



- NOTES:  
 1.ALL DIMENSIONS ARE IN MILLIMETERS  
 2.SPECIFICATIONS SUBJECT TO CHANGE  
 WITHOUT NOTICE

SIZE	Designed by	Date	Checked by	Date	Approved by	Date	Drawed date
A4	 <b>EST</b> Changzhou Esuntech Co.,Ltd <a href="http://www.esuntech.com.cn">http://www.esuntech.com.cn</a>			EUS16F-40TR-WA			
				Ultrasonic Sensor	Edition	Sheet	